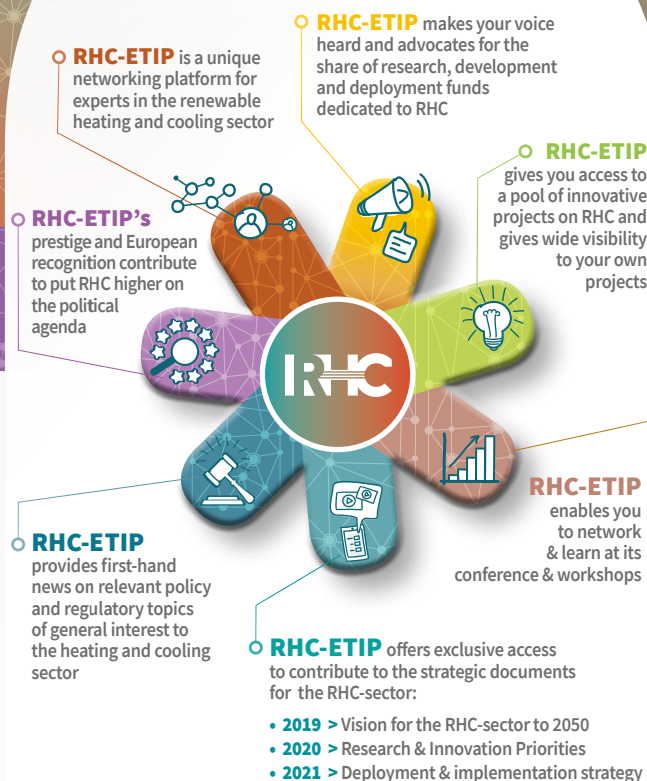


Benefits of being an RHC-ETIP member



Join us today and shape the future of RHC in Europe!

Take an active role in shaping Europe's future strategic and research priorities for the renewable heating and cooling sector: **become a member of the RHC-ETIP**

How to join?

The membership of the RHC-ETIP is free of charge and on a voluntary basis. To apply, fill in the online application form available on www.rhc-platform.org.

Contact us via info@rhc-platform.org

RHC Renewable Heating & Cooling
European Technology and Innovation Platform

Partners



EUREC & BIOENERGY EUROPE coordinate the Secretariat of the European Technology and Innovation Platform on Renewable Heating and Cooling



It coordinates the Biomass Technology Panel & the 100% RE Buildings HWG



It coordinates the Geothermal Technology Panel & the 100% RE Cities HWG



It coordinates the Heat Pump Technology Panel



It coordinates the District Heating and Cooling and Thermal Energy Storage Technology Panel & the 100% RE Districts HWG



It coordinates the Solar Thermal Technology Panel & the 100% RE Industries HWG

Contact us

info@rhc-platform.org
www.rhc-platform.org

Follow us

[@EtipRhc](https://twitter.com/EtipRhc) [#RHCETIP](https://twitter.com/RHCETIP)

The European Technology and Innovation Platform on Renewable Heating & Cooling

RHC Renewable Heating & Cooling



**A unique,
powerful and innovative
network covering all the
renewable heating and cooling
technologies**

www.rhc-platform.org



This project has received funding from the European Union's Horizon 2020 research and innovation programme under grant agreement N° 825998.

How does the new RHC-ETIP work?

What is the RHC-ETIP?

The RHC-ETIP is a network with more than 800 members. Since 2010, the platform gathers industry, research, and academia representing renewable heating and cooling technologies (biomass, solar thermal, geothermal, heat pumps, district heating and cooling, thermal energy storage).

The essential role of renewable energy sources for heating and cooling

Every year, almost 50% of the total energy consumed in Europe is used for the generation of heat for either domestic or industrial purposes. Most of this energy is produced through the combustion of fossil fuels such as oil, gas and coal – with an impressive environmental impact in terms of greenhouse gas emissions.

The heating and cooling sector needs to adopt an integrated and multidisciplinary approach to respond to the challenges linked to the decarbonisation of the whole energy sector, including an analysis of sector coupling.

The new RHC-ETIP structure

In 2018, the RHC-ETIP has adapted its structure to better respond to the heating and cooling sector challenges and to foster the growth and the market uptake of the relevant industries. The focus has shifted from the Technology Panels to the new Horizontal Working Groups.

